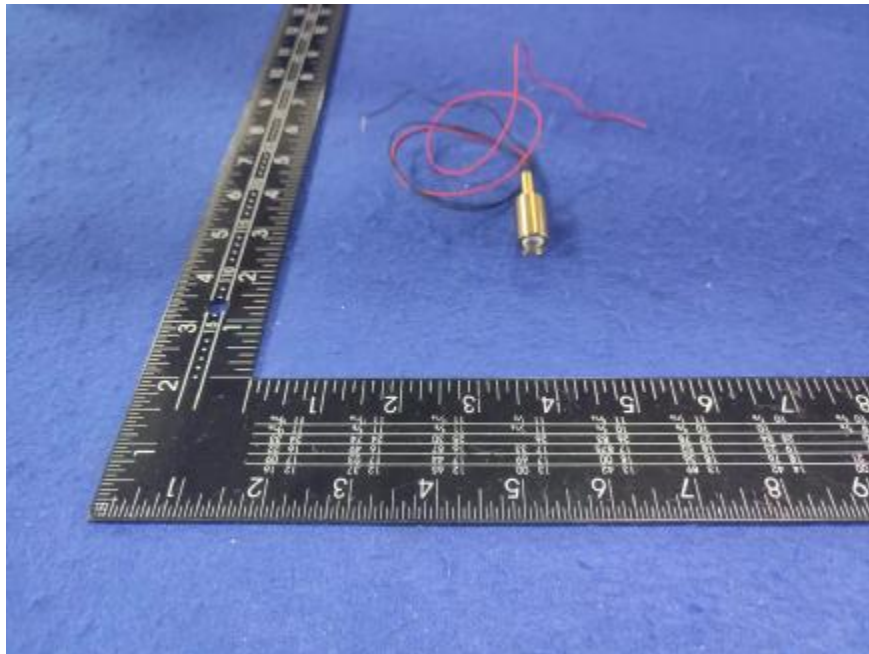


Luminaire Photograph



Light Output Ratio:	61.3%	
Luminaire Power:	0.8774 W	
SHR Nominal:	0.00	Calculated using the TM5
SHR Maximum:	0.30	fine grid method.

C Range: 0 - 360DEG
C Interval: 30.0DEG
Test Speed: HIGH
Temperature: 25.3 °C
Operators: zoe
Test Date: 2024-10-16

γ Range: 0 - 180DEG
γ Interval: 1.0DEG
Test System: EVERFINE GO-SPEX500_V1 SYSTEM V2.00.461
Humidity: 65.0%
Test Distance: 3.160m [K=1.0000]
Remarks: LAMP: BXEX-30G-11H-3A-00-0-0 Ra: 90
LENS: 15R
NOT DRIVER: 300mA
30minutes warm-up

LUMINOUS INTENSITY DISTRIBUTION DIAGRAM

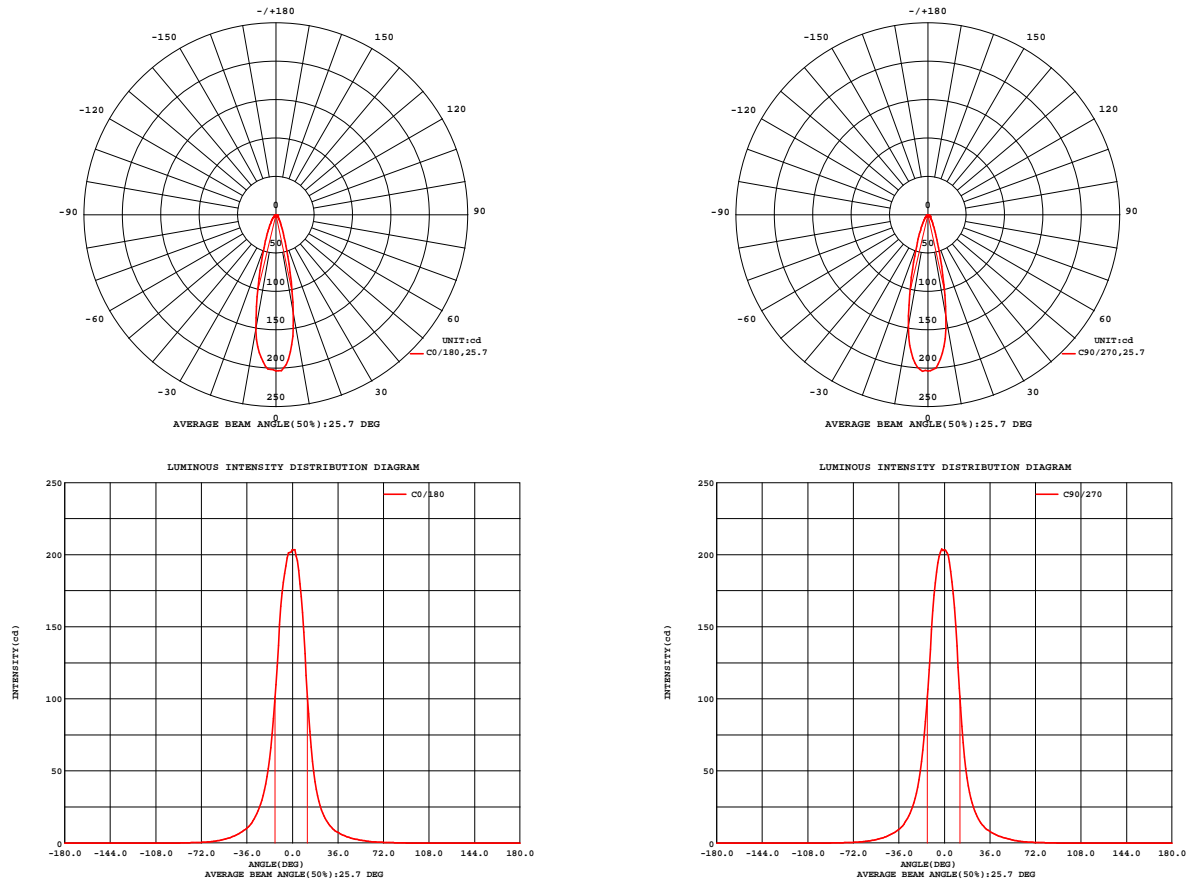


Fig. C0/C180

Fig. C90/C270

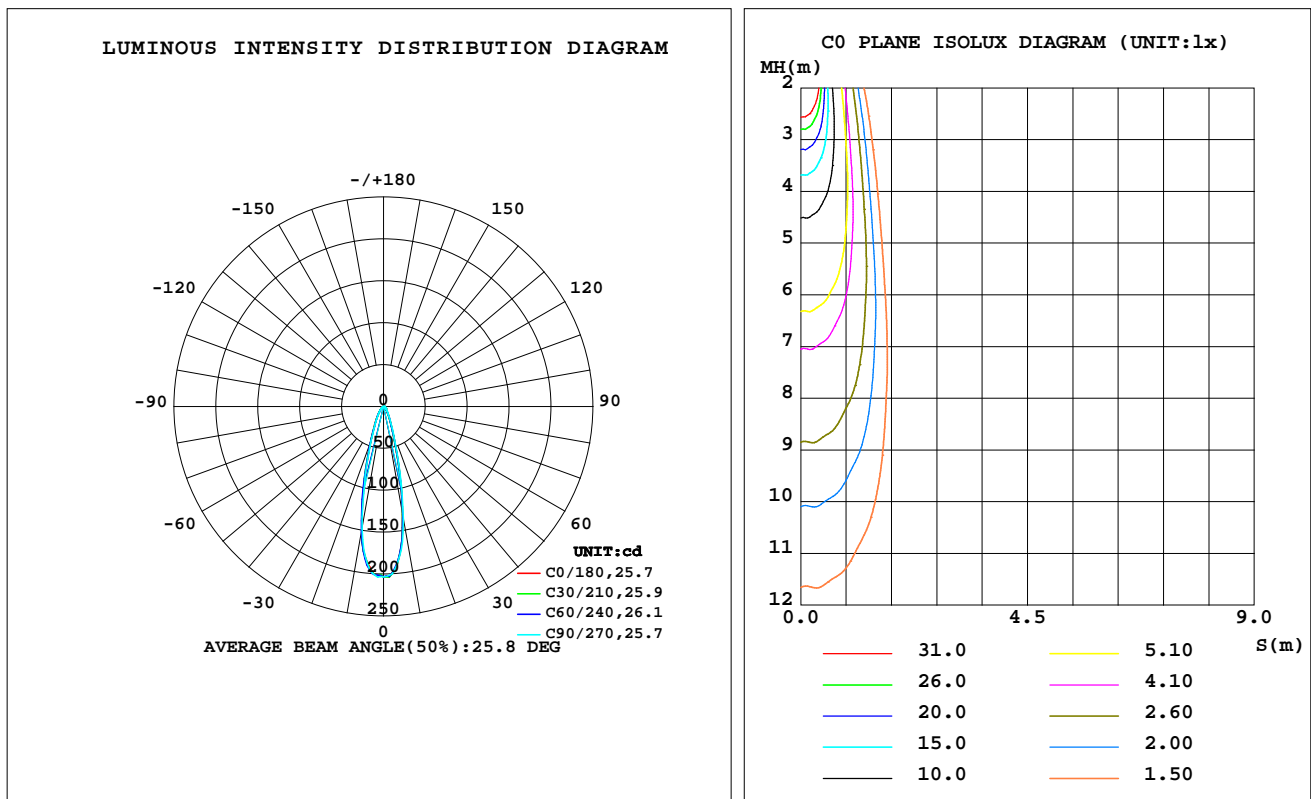
C Range: 0 - 360DEG
C Interval: 30.0DEG
Test Speed: HIGH
Temperature: 25.3 °C
Operators: zoe
Test Date: 2024-10-16

γ Range: 0 - 180DEG
 γ Interval: 1.0DEG
Test System: EVERFINE GO-SPEX500_V1 SYSTEM V2.00.461
Humidity: 65.0%
Test Distance: 3.160m [K=1.0000]
Remarks: LAMP: BXEX-30G-11H-3A-00-0-0 Ra: 90
LENS: 15R
NOT DRIVER: 300mA
30minutes warm-up

LUMINAIRE PHOTOMETRIC TEST REPORT

Test:U:2.9247V I:0.3000A P:0.8774W PF:1.0000 Freq:49.99Hz Lamp Flux:99.5902x1 lm		
NAME: 2468.105	TYPE:	WEIGHT:
SPEC.: 3000K	DIM.:	SERIAL No.: 2410161250
MFR.: RISE	SUR.: 0.00005024m2	Shielding Angle:

DATA OF LAMP		PHOTOMETRIC DATA Eff: 69.61 lm/W			
MODEL	Brideglux	Imax(cd)	204.8	S/MH(C0/180)	0.46
NOMINAL POWER(W)	1	LOR(%)	61.3	S/MH(C90/270)	0.45
RATED VOLTAGE(V)	3	TOTAL FLUX(lm)	61.079	η UP,DN(C0-180)	0.0,28.8
NOMINAL FLUX(lm)	99.5902	CIE CLASS	DIRECT	η UP,DN(C180-360)	0.0,32.5
LAMPS INSIDE	1	η up(%)	0.0	CIBSE SHR NOM	0.00
TEST VOLTAGE(V)	3	η down(%)	61.3	CIBSE SHR MAX	0.30



C Range: 0 - 360DEG
C Interval: 30.0DEG
Test Speed: HIGH
Temperature:25.3℃
Operators:zoe
Test Date:2024-10-16

γ Range: 0 - 180DEG
 γ Interval: 1.0DEG
Test System:EVERFINE GO-SPEX500_V1 SYSTEM V2.00.461
Humidity:65.0%
Test Distance:3.160m [K=1.0000]
Remarks: LAMP:BXEX-30G-11H-3A-00-0-0 Ra:90
LENS:15R
NOT DRIVER:300mA
30minutes warm-up

ZONAL FLUX DIAGRAM

ZONAL FLUX DIAGRAM:

γ	C0	C45	C90	C135	C180	C225	C270	C315	γ	Φ zone	Φ total	%lum,lamp
10	131.4	131.8	136.7	143.0	151.6	151.7	148.1	140.0	0- 10	16.70	16.70	27.3,16.8
20	32.70	31.94	34.96	39.25	46.01	46.27	43.81	36.48	10- 20	21.50	38.19	62.5,38.4
30	11.77	11.62	12.55	14.33	16.84	16.63	15.60	12.96	20- 30	10.58	48.77	79.8,49
40	5.507	5.327	6.042	6.766	7.712	7.417	6.985	5.785	30- 40	5.938	54.71	89.6,54.9
50	2.647	2.557	2.903	3.118	3.449	3.327	3.179	2.666	40- 50	3.439	58.15	95.2,58.4
60	1.170	0.9409	1.174	1.159	1.439	1.258	1.376	1.110	50- 60	1.761	59.91	98.1,60.2
70	0.4817	0.3797	0.4578	0.4672	0.5283	0.4156	0.5064	0.4863	60- 70	0.7193	60.63	99.3,60.9
80	0.2241	0.1885	0.2215	0.2394	0.2253	0.1946	0.2219	0.2523	70- 80	0.3420	60.97	99.8,61.2
90	0	0	0	0	0	0	0	0	80- 90	0.1093	61.08	100,61.3
100	0	0	0	0	0	0	0	0	90-100	0	61.08	100,61.3
110	0	0	0	0	0	0	0	0	100-110	0	61.08	100,61.3
120	0	0	0	0	0	0	0	0	110-120	0	61.08	100,61.3
130	0	0	0	0	0	0	0	0	120-130	0	61.08	100,61.3
140	0	0	0	0	0	0	0	0	130-140	0	61.08	100,61.3
150	0	0	0	0	0	0	0	0	140-150	0	61.08	100,61.3
160	0	0	0	0	0	0	0	0	150-160	0	61.08	100,61.3
170	0	0	0	0	0	0	0	0	160-170	0	61.08	100,61.3
180	0	0	0	0	0	0	0	0	170-180	0	61.08	100,61.3
DEG	LUMINOUS INTENSITY:cd									UNIT:lm		

C Range: 0 - 360DEG
C Interval: 30.0DEG
Test Speed: HIGH
Temperature:25.3℃
Operators:zoe
Test Date:2024-10-16

γ Range: 0 - 180DEG
 γ Interval: 1.0DEG
Test System:EVERFINE GO-SPEX500_V1 SYSTEM V2.00.461
Humidity:65.0%
Test Distance:3.160m [K=1.0000]
Remarks: LAMP:BXEX-30G-11H-3A-00-0-0 Ra:90
LENS:15R
NOT DRIVER:300mA
30minutes warm-up

LUMINANCE LIMITATION CURVES

Test:U:2.9247V I:0.3000A P:0.8774W PF:1.0000 Freq:49.99Hz
Lamp Flux:99.5902x1 lm

NAME: 2468.105

TYPE:

WEIGHT:

SPEC.: 3000K

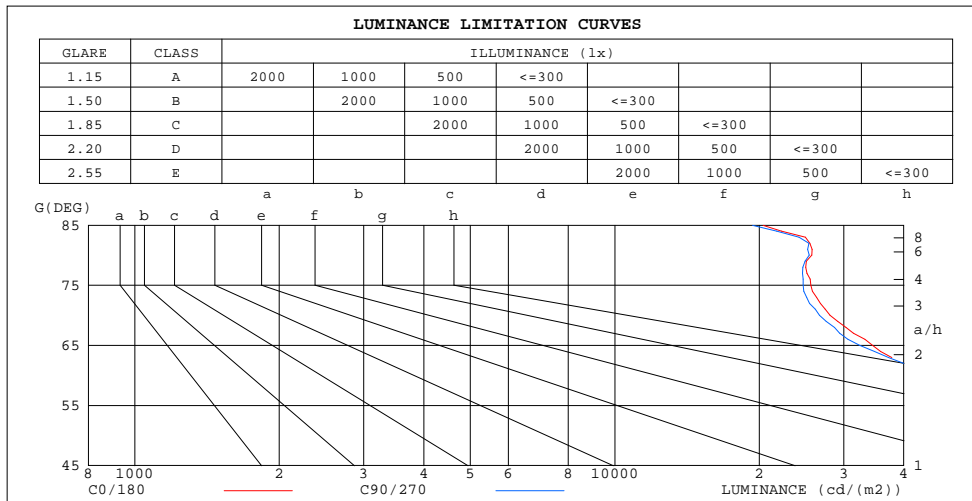
DIM.:

SERIAL No.: 2410161250

MFR.: RISE

SUR.: 0.00005024m2

Shielding Angle:



LUMINANCE cd/(m2)		
G(180)	C0/180	C90/270
85	20373	19370
80	25731	25427
75	25590	24687
70	28085	26683
65	34421	32389
60	46651	46813
55	63642	67161
50	82121	90036
45	106825	118919

C Range: 0 - 360DEG
C Interval: 30.0DEG
Test Speed: HIGH
Temperature:25.3℃
Operators:zoe
Test Date:2024-10-16

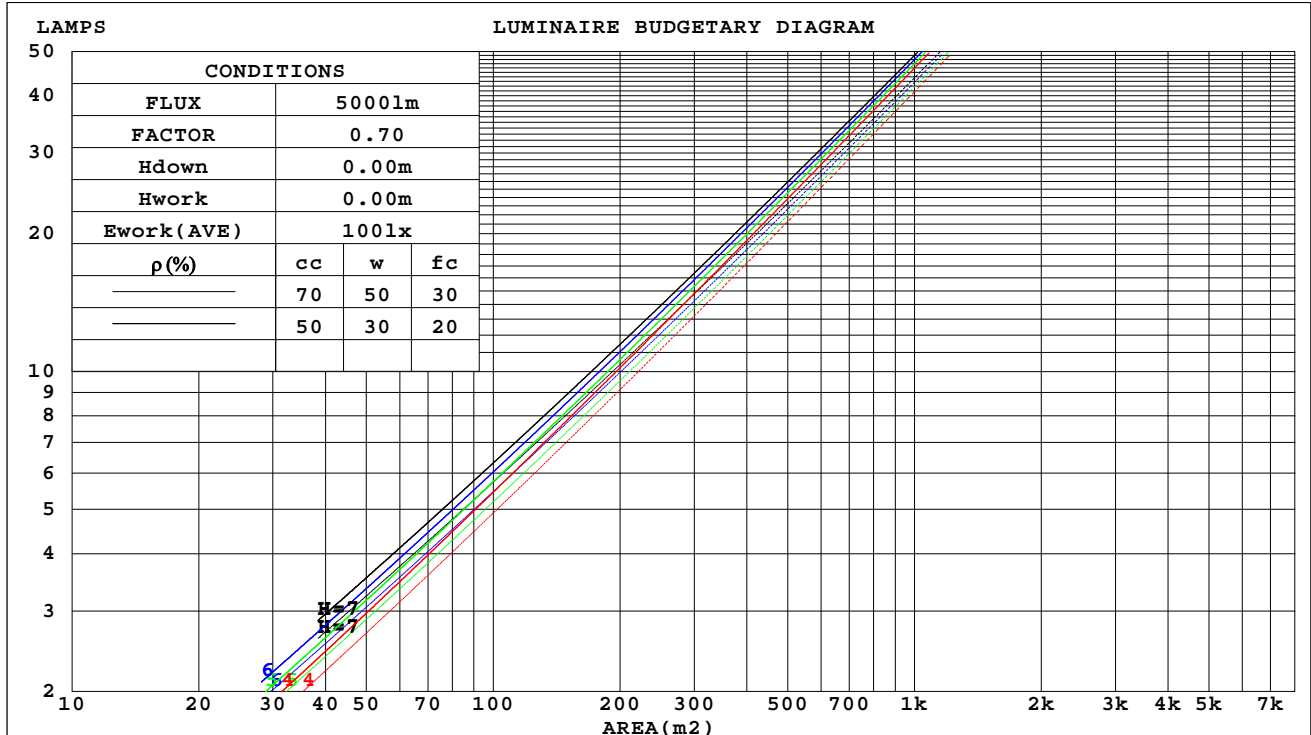
γ Range: 0 - 180DEG
γ Interval: 1.0DEG
Test System:EVERFINE GO-SPEX500_V1 SYSTEM V2.00.461
Humidity:65.0%
Test Distance:3.160m [K=1.0000]
Remarks: LAMP:BXEX-30G-11H-3A-00-0-0 Ra:90
LENS:15R
NOT DRIVER:300mA
30minutes warm-up

CU AND LUMINAIRE BUDGETARY ESTIMATE DIAGRAM

Test:U:2.9247V I:0.3000A P:0.8774W PF:1.0000 Freq:49.99Hz
Lamp Flux:99.5902x1 lm

NAME: 2468.105	TYPE:	WEIGHT:
SPEC.: 3000K	DIM.:	SERIAL No.: 2410161250
MFR.: RISE	SUR.: 0.00005024m2	Shielding Angle:

ρ_{cc}	80%			70%			50%			30%			10%			0
ρ_w	50%	30%	10%	50%	30%	10%	50%	30%	10%	50%	30%	10%	50%	30%	10%	0
ρ_{fc}	20%			20%			20%			20%			20%			0
RCR	RCR:Room Cavity Ratio			Coefficients of Utilization(CU)												
0.0	.73	.73	.73	.71	.71	.71	.68	.68	.68	.65	.65	.65	.63	.63	.63	.61
1.0	.68	.67	.66	.67	.66	.65	.65	.64	.63	.62	.62	.61	.60	.60	.59	.58
2.0	.64	.62	.60	.63	.61	.59	.61	.60	.58	.59	.58	.57	.58	.57	.56	.55
3.0	.61	.58	.56	.60	.57	.55	.58	.56	.54	.57	.55	.54	.55	.54	.53	.52
4.0	.57	.54	.52	.57	.54	.52	.55	.53	.51	.54	.52	.51	.53	.51	.50	.49
5.0	.55	.51	.49	.54	.51	.49	.53	.50	.49	.52	.50	.48	.51	.49	.48	.47
6.0	.52	.49	.47	.52	.49	.47	.51	.48	.46	.50	.48	.46	.49	.47	.46	.45
7.0	.50	.47	.44	.49	.46	.44	.49	.46	.44	.48	.46	.44	.47	.45	.44	.43
8.0	.48	.45	.43	.47	.45	.42	.47	.44	.42	.46	.44	.42	.46	.44	.42	.41
9.0	.46	.43	.41	.46	.43	.41	.45	.43	.41	.45	.42	.41	.44	.42	.40	.40
10.0	.44	.41	.39	.44	.41	.39	.44	.41	.39	.43	.41	.39	.43	.41	.39	.38



C Range: 0 - 360DEG
C Interval: 30.0DEG
Test Speed: HIGH
Temperature:25.3℃
Operators:zoe
Test Date:2024-10-16

γ Range: 0 - 180DEG
 γ Interval: 1.0DEG
Test System:EVERFINE GO-SPEX500_V1 SYSTEM V2.00.461
Humidity:65.0%
Test Distance:3.160m [K=1.0000]
Remarks: LAMP:BXEX-30G-11H-3A-00-0-0 Ra:90
LENS:15R
NOT DRIVER:300mA
30minutes warm-up

WEC AND CCEC

Test:U:2.9247V I:0.3000A P:0.8774W PF:1.0000 Freq:49.99Hz Lamp Flux:99.5902x1 lm		
NAME: 2468.105	TYPE:	WEIGHT:
SPEC.: 3000K	DIM.:	SERIAL No.: 2410161250
MFR.: RISE	SUR.: 0.00005024m2	Shielding Angle:

pcc	80%			70%			50%			30%			10%			0
pw	50%	30%	10%	50%	30%	10%	50%	30%	10%	50%	30%	10%	50%	30%	10%	0
pfc	20%			20%			20%			20%			20%			0
RCR	RCR:Room Cavity Ratio						Wall Exitance Coefficients(WEC)									
0.0																
1.0	.101	.057	.018	.097	.055	.018	.089	.051	.016	.082	.047	.015	.075	.044	.014	
2.0	.095	.052	.016	.092	.050	.016	.085	.047	.015	.079	.044	.014	.074	.042	.013	
3.0	.089	.047	.014	.086	.046	.014	.081	.044	.013	.076	.042	.013	.071	.039	.012	
4.0	.084	.044	.013	.081	.043	.013	.077	.041	.012	.073	.039	.012	.069	.037	.011	
5.0	.079	.040	.012	.077	.040	.012	.073	.038	.011	.069	.037	.011	.066	.035	.011	
6.0	.075	.038	.011	.073	.037	.011	.070	.036	.010	.066	.034	.010	.063	.033	.010	
7.0	.071	.035	.010	.069	.035	.010	.066	.034	.010	.063	.033	.009	.061	.032	.009	
8.0	.067	.033	.009	.066	.033	.009	.063	.032	.009	.061	.031	.009	.058	.030	.009	
9.0	.064	.031	.009	.063	.031	.009	.061	.030	.008	.058	.029	.008	.056	.029	.008	
10.0	.061	.029	.008	.060	.029	.008	.058	.028	.008	.056	.028	.008	.054	.027	.008	

pcc	80%			70%			50%			30%			10%			0	
pw	50%	30%	10%	50%	30%	10%	50%	30%	10%	50%	30%	10%	50%	30%	10%	0	
pfc	20%			20%			20%			20%			20%			0	
RCR	RCR:Room Cavity Ratio						Ceiling Cavity Exitance Coefficients(CCEC)										
0.0	.117	.117	.117	.100	.100	.100	.068	.068	.068	.039	.039	.039	.013	.013	.013		
1.0	.104	.097	.089	.089	.083	.077	.061	.057	.053	.035	.033	.031	.011	.011	.010		
2.0	.094	.081	.070	.081	.070	.061	.055	.048	.042	.032	.028	.025	.010	.009	.008		
3.0	.086	.070	.056	.074	.060	.049	.051	.042	.034	.029	.024	.020	.009	.008	.007		
4.0	.079	.060	.046	.068	.052	.040	.047	.036	.028	.027	.021	.017	.009	.007	.005		
5.0	.073	.053	.038	.063	.046	.033	.043	.032	.023	.025	.019	.014	.008	.006	.005		
6.0	.068	.047	.032	.059	.041	.028	.040	.029	.020	.023	.017	.012	.008	.006	.004		
7.0	.064	.042	.027	.055	.037	.024	.038	.026	.017	.022	.015	.010	.007	.005	.003		
8.0	.060	.038	.024	.052	.033	.021	.036	.023	.015	.021	.014	.009	.007	.005	.003		
9.0	.057	.035	.020	.049	.030	.018	.034	.021	.013	.020	.013	.008	.006	.004	.003		
10.0	.054	.032	.018	.046	.028	.016	.032	.020	.011	.019	.012	.007	.006	.004	.002		

C Range: 0 - 360DEG
C Interval: 30.0DEG
Test Speed: HIGH
Temperature:25.3℃
Operators:zoe
Test Date:2024-10-16

γ Range: 0 - 180DEG
γ Interval: 1.0DEG
Test System:EVERFINE GO-SPEX500_V1 SYSTEM V2.00.461
Humidity:65.0%
Test Distance:3.160m [K=1.0000]
Remarks: LAMP:BXEX-30G-11H-3A-00-0-0 Ra:90
LENS:15R
NOT DRIVER:300mA
30minutes warm-up

UGR(Unified Glare Rating) Table

Test:U:2.9247V I:0.3000A P:0.8774W PF:1.0000 Freq:49.99Hz Lamp Flux:99.5902x1 lm										
NAME: 2468.105					TYPE:			WEIGHT:		
SPEC.: 3000K					DIM.:			SERIAL No.: 2410161250		
MFR.: RISE					SUR.: 0.00005024m2			Shielding Angle:		
ceiling/cavity	0.7	0.7	0.5	0.5	0.3	0.7	0.7	0.5	0.5	0.3
walls	0.5	0.3	0.5	0.3	0.3	0.5	0.3	0.5	0.3	0.3
working plane	0.2	0.2	0.2	0.2	0.2	0.2	0.2	0.2	0.2	0.2
Room dimensions	Viewed crosswise					Viewed endwise				
x = 2H y = 2H	30.1	30.9	30.3	31.1	31.2	30.4	31.2	30.6	31.4	31.5
3H	30.3	31.1	30.6	31.3	31.5	30.6	31.3	30.8	31.5	31.7
4H	30.4	31.2	30.7	31.4	31.6	30.6	31.4	30.9	31.6	31.8
6H	30.5	31.2	30.8	31.5	31.7	30.7	31.4	31.0	31.6	31.9
8H	30.6	31.2	30.9	31.5	31.8	30.8	31.4	31.1	31.7	31.9
12H	30.6	31.2	30.9	31.5	31.8	30.8	31.4	31.1	31.7	31.9
4H 2H	30.1	30.8	30.4	31.0	31.3	30.4	31.1	30.6	31.3	31.5
3H	30.4	31.0	30.7	31.3	31.6	30.6	31.2	30.9	31.5	31.8
4H	30.6	31.1	30.9	31.4	31.7	30.7	31.3	31.1	31.6	31.9
6H	30.8	31.3	31.1	31.6	31.9	30.9	31.4	31.3	31.7	32.1
8H	30.8	31.3	31.2	31.7	32.0	31.0	31.4	31.4	31.8	32.2
12H	30.9	31.3	31.3	31.7	32.1	31.0	31.4	31.4	31.8	32.2
8H 4H	30.5	31.0	30.9	31.4	31.7	30.7	31.2	31.1	31.5	31.9
6H	30.8	31.2	31.2	31.6	32.0	30.9	31.3	31.4	31.7	32.1
8H	30.9	31.3	31.4	31.7	32.1	31.1	31.4	31.5	31.8	32.3
12H	31.0	31.3	31.5	31.7	32.2	31.1	31.4	31.6	31.9	32.3
12H 4H	30.5	30.9	30.9	31.3	31.7	30.7	31.1	31.1	31.5	31.9
6H	30.8	31.1	31.2	31.5	32.0	30.9	31.3	31.4	31.7	32.1
8H	30.9	31.2	31.4	31.7	32.1	31.1	31.4	31.5	31.8	32.3
Variations with the observer position at spacings(CIE Pub.117):										
S = 1.0H	+ 1.1 / - 1.4					+ 1.2 / - 1.5				
1.5H	+ 1.5 / - 1.2					+ 1.7 / - 1.4				
2.0H	+ 2.2 / - 2.5					+ 2.7 / - 2.7				

CIE Pub.117, 99.59 lm Total Lamp Luminous Flux Correct (8log(F/F0) = -8.0)
Area: 5.024e-005 m2

C Range: 0 - 360DEG
C Interval: 30.0DEG
Test Speed: HIGH
Temperature:25.3℃
Operators:zoe
Test Date:2024-10-16

γ Range: 0 - 180DEG
γ Interval: 1.0DEG
Test System:EVERFINE GO-SPEX500_V1 SYSTEM V2.00.461
Humidity:65.0%
Test Distance:3.160m [K=1.0000]
Remarks: LAMP:BXEX-30G-11H-3A-00-0-0 Ra:90
LENS:15R
NOT DRIVER:300mA
30minutes warm-up

UTILIZATION FACTORS TABLE

Test:U:2.9247V I:0.3000A P:0.8774W PF:1.0000 Freq:49.99Hz Lamp Flux:99.5902x1 lm		
NAME: 2468.105	TYPE:	WEIGHT:
SPEC.: 3000K	DIM.:	SERIAL No.: 2410161250
MFR.: RISE	SUR.: 0.00005024m2	Shielding Angle:

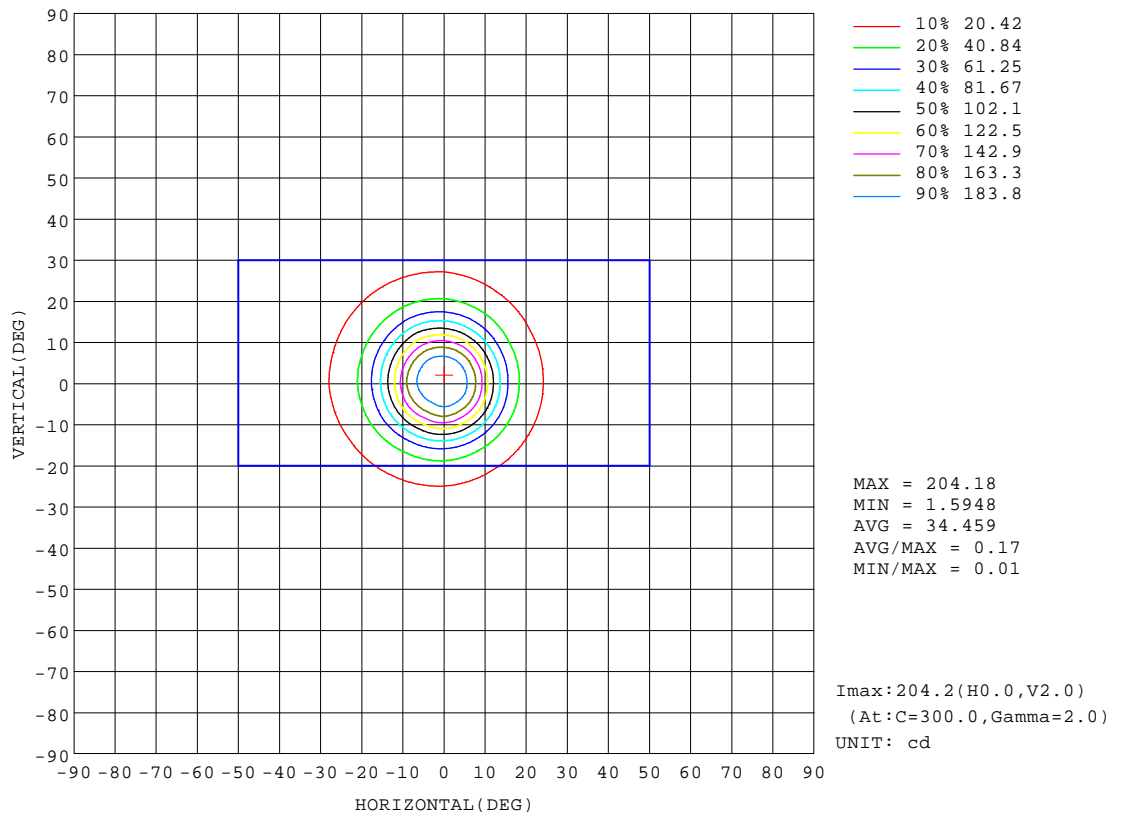
REFLECTANCE										
Ceiling	0.8	0.8	0.8	0.7	0.7	0.7	0.5	0.5	0.5	0
Walls	0.7	0.5	0.3	0.7	0.5	0.3	0.7	0.5	0.3	0
Working plane	0.2	0.2	0.2	0.2	0.2	0.2	0.2	0.2	0.2	0
ROOM INDEX	UTILIZATION FACTORS(PERCENT) $k(RI) \times RCR = 5$									
k = 0.60	52	48	45	52	48	45	51	48	45	43
0.80	57	53	51	56	53	50	56	52	50	48
1.00	60	56	54	59	56	54	58	56	53	51
1.25	62	59	57	62	59	57	61	58	56	53
1.50	64	61	59	63	61	59	62	60	58	55
2.00	66	63	61	65	63	61	63	61	60	57
2.50	67	65	63	66	64	62	64	62	61	57
3.00	68	66	64	67	65	63	65	63	62	58
4.00	69	68	66	68	67	65	66	65	64	59
5.00	70	69	68	69	68	67	67	66	65	60
ROOM INDEX	UF(total)									Direct
According to DIN EN 13032-2 2004			Suspended					SHRNOM = 1.25		

C Range: 0 - 360DEG
C Interval: 30.0DEG
Test Speed: HIGH
Temperature:25.3℃
Operators:zoe
Test Date:2024-10-16

γ Range: 0 - 180DEG
γ Interval: 1.0DEG
Test System:EVERFINE GO-SPEX500_V1 SYSTEM V2.00.461
Humidity:65.0%
Test Distance:3.160m [K=1.0000]
Remarks: LAMP:BXEX-30G-11H-3A-00-0-0 Ra:90
LENS:15R
NOT DRIVER:300mA
30minutes warm-up

ISOCANDELA DIAGRAM

Test:U:2.9247V I:0.3000A P:0.8774W PF:1.0000 Freq:49.99Hz Lamp Flux:99.5902x1 lm		
NAME: 2468.105	TYPE:	WEIGHT:
SPEC.: 3000K	DIM.:	SERIAL No.: 2410161250
MFR.: RISE	SUR.: 0.00005024m2	Shielding Angle:

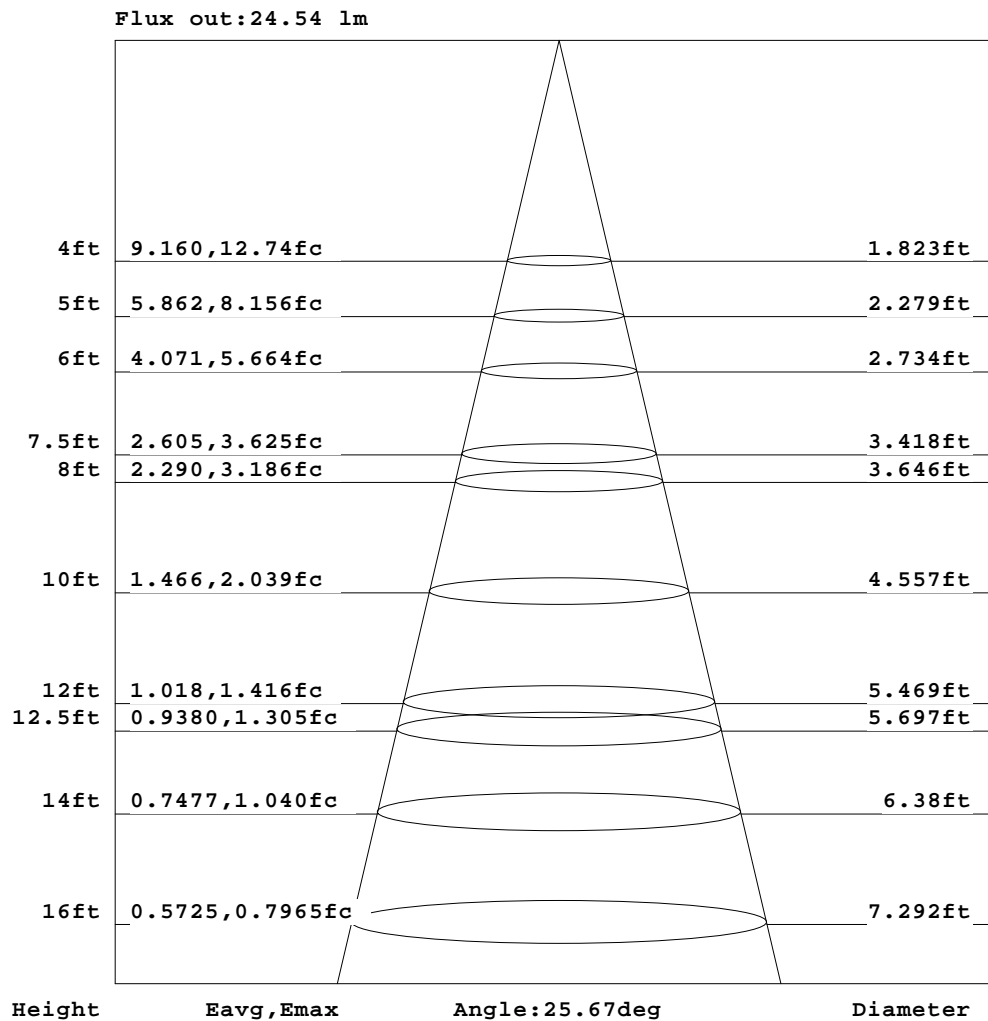


C Range: 0 - 360DEG
C Interval: 30.0DEG
Test Speed: HIGH
Temperature: 25.3 °C
Operators: zoe
Test Date: 2024-10-16

γ Range: 0 - 180DEG
γ Interval: 1.0DEG
Test System: EVERFINE GO-SPEX500_V1 SYSTEM V2.00.461
Humidity: 65.0%
Test Distance: 3.160m [K=1.0000]
Remarks: LAMP: BXEX-30G-11H-3A-00-0-0 Ra: 90
LENS: 15R
NOT DRIVER: 300mA
30minutes warm-up

AAI Figure

Test:U:2.9247V I:0.3000A P:0.8774W PF:1.0000 Freq:49.99Hz Lamp Flux:99.5902x1 lm		
NAME: 2468.105	TYPE:	WEIGHT:
SPEC.: 3000K	DIM.:	SERIAL No.: 2410161250
MFR.: RISE	SUR.: 0.00005024m2	Shielding Angle:



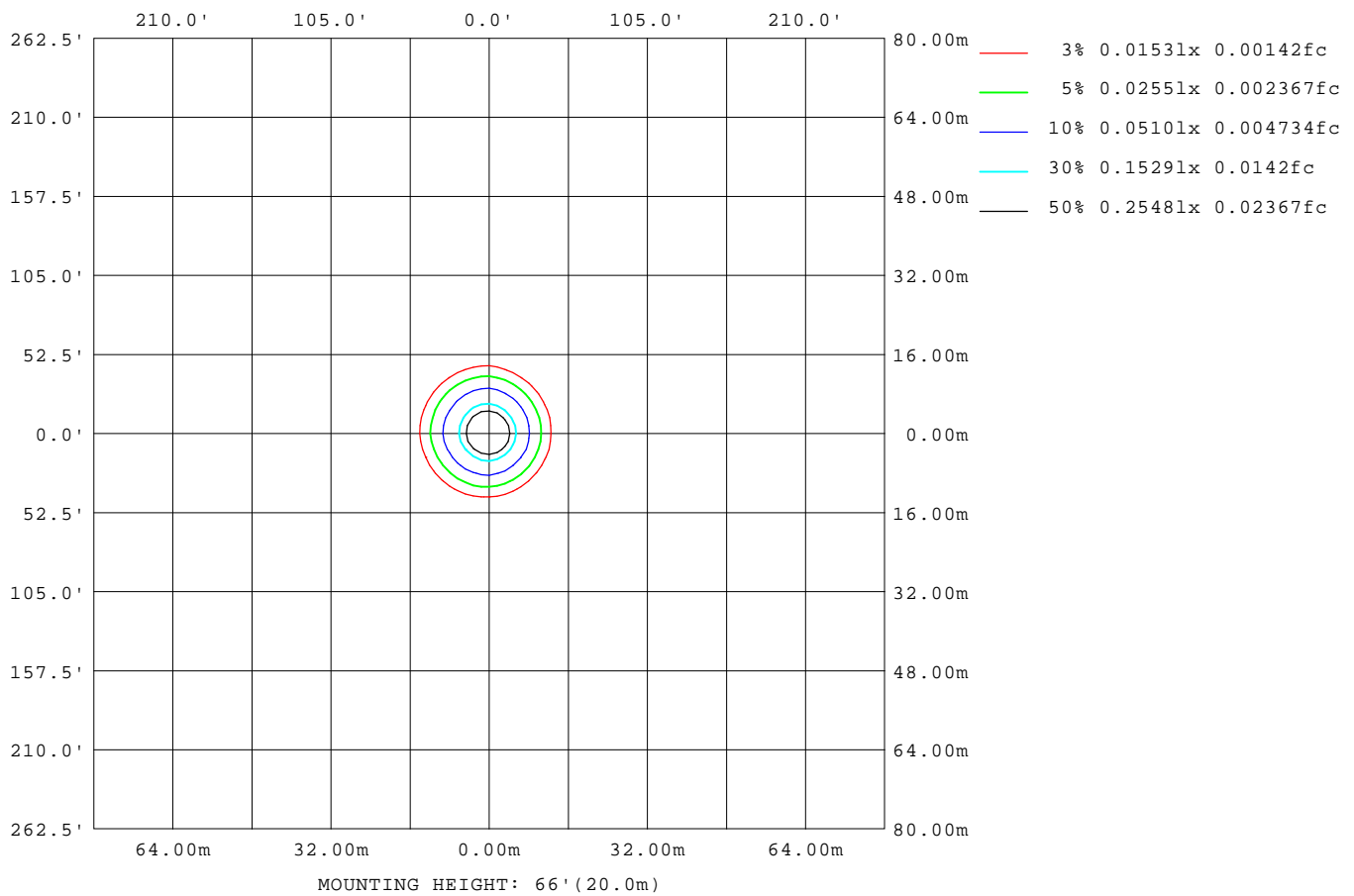
Note: The Curves indicate the illuminated area and the average illumination when the luminaire is at different distance.

C Range: 0 - 360DEG
C Interval: 30.0DEG
Test Speed: HIGH
Temperature: 25.3°C
Operators: zoe
Test Date: 2024-10-16

γ Range: 0 - 180DEG
γ Interval: 1.0DEG
Test System: EVERFINE GO-SPEX500_V1 SYSTEM V2.00.461
Humidity: 65.0%
Test Distance: 3.160m [K=1.0000]
Remarks: LAMP: BXEX-30G-11H-3A-00-0-0 Ra: 90
LENS: 15R
NOT DRIVER: 300mA
30minutes warm-up

ISOLUX DIAGRAM

Test:U:2.9247V I:0.3000A P:0.8774W PF:1.0000 Freq:49.99Hz Lamp Flux:99.5902x1 lm		
NAME: 2468.105	TYPE:	WEIGHT:
SPEC.: 3000K	DIM.:	SERIAL No.: 2410161250
MFR.: RISE	SUR.: 0.00005024m2	Shielding Angle:



C Range: 0 - 360DEG
C Interval: 30.0DEG
Test Speed: HIGH
Temperature:25.3℃
Operators:zoe
Test Date:2024-10-16

γ Range: 0 - 180DEG
γ Interval: 1.0DEG
Test System:EVERFINE GO-SPEX500_V1 SYSTEM V2.00.461
Humidity:65.0%
Test Distance:3.160m [K=1.0000]
Remarks: LAMP:BXEX-30G-11H-3A-00-0-0 Ra:90
LENS:15R
NOT DRIVER:300mA
30minutes warm-up

LED Avg.L Report

Test:U:2.9247V I:0.3000A P:0.8774W PF:1.0000 Freq:49.99Hz Lamp Flux:99.5902x1 lm		
NAME: 2468.105	TYPE:	WEIGHT:
SPEC.: 3000K	DIM.:	SERIAL No.: 2410161250
MFR.: RISE	SUR.: 0.00005024m2	Shielding Angle:

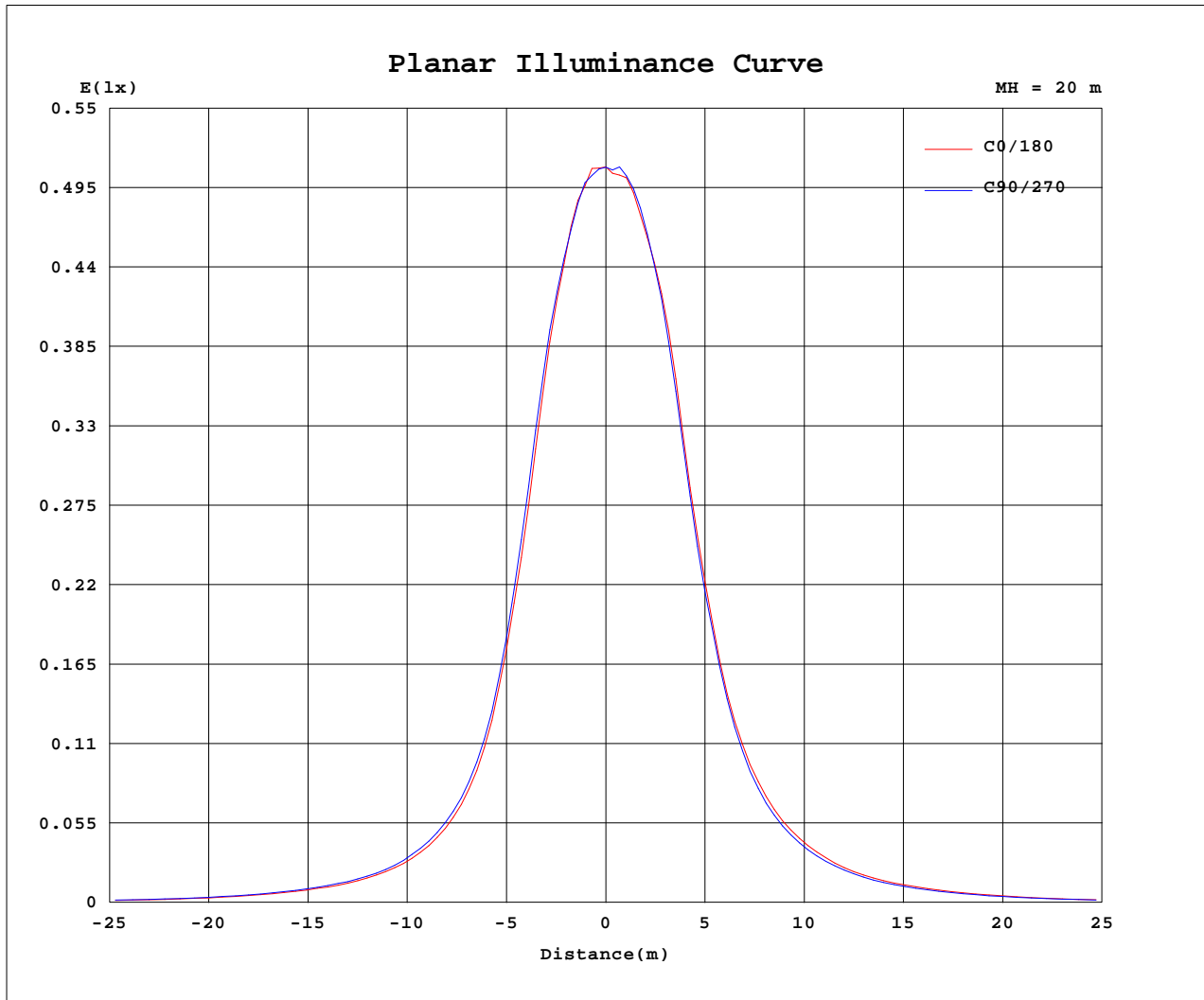
AvgL	cd/m2
L_0~180(65)av	38040
L_0~180(75)av	25679
L_0~180(85)av	22282
L_90~270(65)av	35946
L_90~270(75)av	25202
L_90~270(85)av	21936
L_45(65)av	28731
L_45(75)av	23609
L_45(85)av	23386

Standard: GB/T 29293-2012

C Range: 0 - 360DEG
C Interval: 30.0DEG
Test Speed: HIGH
Temperature:25.3℃
Operators:zoe
Test Date:2024-10-16

γ Range: 0 - 180DEG
γ Interval: 1.0DEG
Test System:EVERFINE GO-SPEX500_V1 SYSTEM V2.00.461
Humidity:65.0%
Test Distance:3.160m [K=1.0000]
Remarks: LAMP:BXEX-30G-11H-3A-00-0-0 Ra:90
LENS:15R
NOT DRIVER:300mA
30minutes warm-up

Planar Illuminance Curve



C Range: 0 - 360DEG
 C Interval: 30.0DEG
 Test Speed: HIGH
 Temperature: 25.3 °C
 Operators: zoe
 Test Date: 2024-10-16

γ Range: 0 - 180DEG
 γ Interval: 1.0DEG
 Test System: EVERFINE GO-SPEX500_V1 SYSTEM V2.00.461
 Humidity: 65.0%
 Test Distance: 3.160m [K=1.0000]
 Remarks: LAMP: BXEX-30G-11H-3A-00-0-0 Ra: 90
 LENS: 15R
 NOT DRIVER: 300mA
 30minutes warm-up



LUMINOUS DISTRIBUTION INTENSITY DATA

Test:U:2.9247V I:0.3000A P:0.8774W PF:1.0000 Freq:49.99Hz Lamp Flux:99.5902x1 lm		
NAME: 2468.105	TYPE:	WEIGHT:
SPEC.: 3000K	DIM.:	SERIAL No.: 2410161250
MFR.: RISE	SUR.: 0.00005024m2	Shielding Angle:

Table--1

UNIT: cd

C(DEG) γ (DEG)	0	30	60	90	120	150	180	210	240	270	300	330						
0	203	203	203	203	203	203	203	203	203	203	203	203						
5	189	188	187	188	188	191	192	194	195	194	194	192						
10	131	131	132	137	138	148	152	151	152	148	144	136						
15	66.5	66.7	66.4	69.6	74.1	81.5	86.2	88.6	89.5	84.2	77.7	70.5						
20	32.7	31.8	32.0	35.0	36.9	41.6	46.0	46.3	46.2	43.8	38.9	34.0						
25	18.7	18.3	18.5	20.2	21.5	23.5	27.0	26.6	26.2	25.1	21.7	19.3						
30	11.8	11.5	11.7	12.6	13.7	14.9	16.8	16.9	16.4	15.6	13.5	12.4						
35	7.85	7.68	7.91	8.66	9.43	10.1	11.0	11.1	10.7	10.1	8.75	8.08						
40	5.51	5.21	5.44	6.04	6.52	7.01	7.71	7.55	7.29	6.98	5.99	5.58						
45	3.79	3.61	3.76	4.22	4.52	4.80	5.27	5.16	4.93	4.76	4.06	3.81						
50	2.65	2.54	2.58	2.90	3.05	3.18	3.45	3.42	3.23	3.18	2.72	2.61						
55	1.83	1.65	1.63	1.93	1.95	2.04	2.27	2.20	2.04	2.13	1.83	1.75						
60	1.17	0.95	0.93	1.17	1.12	1.20	1.44	1.33	1.19	1.38	1.13	1.09						
65	0.73	0.54	0.53	0.69	0.63	0.65	0.89	0.72	0.63	0.84	0.67	0.66						
70	0.48	0.39	0.37	0.46	0.46	0.48	0.53	0.45	0.39	0.51	0.48	0.49						
75	0.33	0.28	0.27	0.32	0.33	0.34	0.34	0.30	0.26	0.33	0.35	0.35						
80	0.22	0.19	0.19	0.22	0.23	0.25	0.23	0.21	0.18	0.22	0.25	0.26						
85	0.09	0.08	0.08	0.08	0.10	0.12	0.11	0.10	0.09	0.11	0.13	0.12						
90	0.00	0.00	0.00	0.00	0.00	0.00	0.00	0.00	0.00	0.00	0.00	0.00						
95	0.00	0.00	0.00	0.00	0.00	0.00	0.00	0.00	0.00	0.00	0.00	0.00						
100	0.00	0.00	0.00	0.00	0.00	0.00	0.00	0.00	0.00	0.00	0.00	0.00						
105	0.00	0.00	0.00	0.00	0.00	0.00	0.00	0.00	0.00	0.00	0.00	0.00						
110	0.00	0.00	0.00	0.00	0.00	0.00	0.00	0.00	0.00	0.00	0.00	0.00						
115	0.00	0.00	0.00	0.00	0.00	0.00	0.00	0.00	0.00	0.00	0.00	0.00						
120	0.00	0.00	0.00	0.00	0.00	0.00	0.00	0.00	0.00	0.00	0.00	0.00						
125	0.00	0.00	0.00	0.00	0.00	0.00	0.00	0.00	0.00	0.00	0.00	0.00						
130	0.00	0.00	0.00	0.00	0.00	0.00	0.00	0.00	0.00	0.00	0.00	0.00						
135	0.00	0.00	0.00	0.00	0.00	0.00	0.00	0.00	0.00	0.00	0.00	0.00						
140	0.00	0.00	0.00	0.00	0.00	0.00	0.00	0.00	0.00	0.00	0.00	0.00						
145	0.00	0.00	0.00	0.00	0.00	0.00	0.00	0.00	0.00	0.00	0.00	0.00						
150	0.00	0.00	0.00	0.00	0.00	0.00	0.00	0.00	0.00	0.00	0.00	0.00						
155	0.00	0.00	0.00	0.00	0.00	0.00	0.00	0.00	0.00	0.00	0.00	0.00						
160	0.00	0.00	0.00	0.00	0.00	0.00	0.00	0.00	0.00	0.00	0.00	0.00						
165	0.00	0.00	0.00	0.00	0.00	0.00	0.00	0.00	0.00	0.00	0.00	0.00						
170	0.00	0.00	0.00	0.00	0.00	0.00	0.00	0.00	0.00	0.00	0.00	0.00						
175	0.00	0.00	0.00	0.00	0.00	0.00	0.00	0.00	0.00	0.00	0.00	0.00						
180	0.00	0.00	0.00	0.00	0.00	0.00	0.00	0.00	0.00	0.00	0.00	0.00						

C Range: 0 - 360DEG
C Interval: 30.0DEG
Test Speed: HIGH
Temperature:25.3℃
Operators:zoe
Test Date:2024-10-16

γ Range: 0 - 180DEG
γ Interval: 1.0DEG
Test System:EVERFINE GO-SPEX500_V1 SYSTEM V2.00.461
Humidity:65.0%
Test Distance:3.160m [K=1.0000]
Remarks: LAMP:BXEX-30G-11H-3A-00-0-0 Ra:90
LENS:15R
NOT DRIVER:300mA
30minutes warm-up